

SC

SONNING COMMON MAGAZINE



DEC/JAN 2024/25

HAVE A MAGICAL CHRISTMAS

IN THIS ISSUE

QR CODES FOR ONLINE ARTICLES

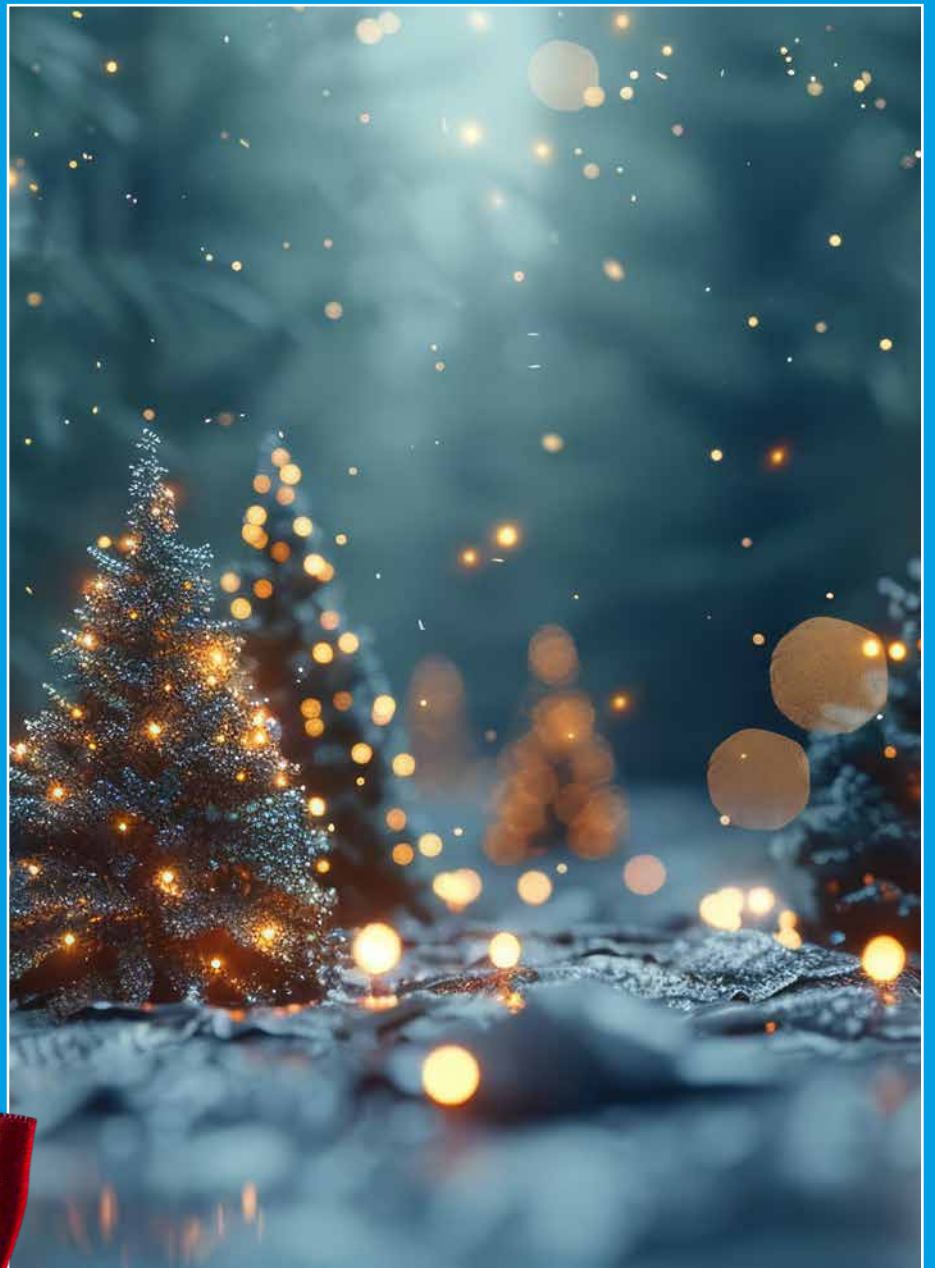
Look out for the QR codes
P5-7

REPAIR CAFÉ

Pre-school children very
happy with bike repairs
P9

A TIME FOR GIVING

Request for donations
for our Christmas appeal
P26



www.sonningcommonmagazine.org



[sonningcommonmagazine](https://www.facebook.com/sonningcommonmagazine)

Sonning Common's longest serving Estate Agency



Beville Estate Agency established in 2002, and serving South Oxfordshire and North Berkshire. With excellent Google reviews and combined experience of over 65 years, Richard, Marcus and Karen offer a personalised selling and letting service and would be delighted to talk to you about any requirements you may have.

If you are thinking of moving, call us for a free, no obligation, valuation on 0118 924 25 26 or e-mail info@beville.co.uk

Recently confirmed in Rightmove's annual statistics, Beville Estate Agency sold the most properties in Sonning Common in 2023.

Continuing our excellent work, Beville Estate Agency have sold the most properties in Sonning Common so far in 2024. Please see our latest testimonials:

"Thank you Richard, Marcus & Karen for your professionalism with our delicate sale, you handled it brilliantly, and in a speedy fashion, in these difficult times." *Mr Stevens*

"Marcus, Richard and Karen were fantastic throughout our buying process. They kept the process moving forward with quick and clear communication. Helps they were a nice bunch too!" *Mr Simmons*

"Would thoroughly recommend the team at Beville Estate Agents, they found us a buyer in a matter of weeks and led us through to a successful sale and completion. Excellent service and customer care." *Mr & Mrs Pilling*

"We have had experience dealing with Beville Estate Agents as a purchaser in 2020, and we chose to use them to sell our home. Richard and Marcus were professional, helpful and honest and a pleasure to deal with both as buyers and as sellers. Their service went above and beyond and we would not hesitate to recommend them to others" *Mr & Mrs Aronsson-Storrier*

- Sales & Lettings
- Free Residential Valuations
- Probate Valuations
- Relocation company sales
- Land & Planning advice
- New homes
- EPC'S



28 Peppard Road, Sonning Common, South Oxon, RG4 9SU

0118 924 25 26

www.beville.co.uk

info@beville.co.uk

FROM THE EDITORIAL TEAM

What a lovely experience. I have been overwhelmed by lots of interesting stories/ happenings all of which needed to be crammed into 23 pages. I do hope you will find lots of events to engage you and your family over the Christmas period. Due to shortage of space you will see on the four Community pages we have a full page with another topic underneath. These topics are on the www.sonningcommonmagazine.org page showing the front cover of this issue with QR codes to direct you to them.

Christmas 2024 is very close by and as we have done over the years we are asking for donations to give vouchers to disadvantaged and elderly villagers. How to donate is below.

Best wishes and happy days from the team at Sonning Common Magazine •

Diana Pearman

Over the past few years this has been a charitable cause led and supported by the Sonning Common magazine. It started in Lockdown when it was perceived to be a 'bit of a treat' for disadvantaged members of our community. This year we will again work with Springwater Food Bank and FISH. The vouchers then will be purchased for distribution.

Last year it was decided to change from a treat box to giving vouchers. The vouchers were All in One, which can be used in many shops, or one from the Co-Op. This enable recipients to choose their Christmas treats or necessities locally.

Donating through JustGiving is simple, fast and totally secure. Your details are safe with JustGiving - they'll never sell them on or send unwanted emails. Once you donate, funds will be withdrawn directly to be held in an account at the Parish Office. It's the most efficient way to donate and saves time and costs. •

Thank you - Diana and Christine on behalf of SC Magazine

[Justgiving.com/crowdfunding/scmagazinechristmasvouchers](https://www.justgiving.com/crowdfunding/scmagazinechristmasvouchers)

For more information please see page 26



scan the QR code to donate

MEET THE EDITORIAL TEAM



Diana Pearman



Christine Atkinson



Joan Grummant

USEFUL CONTACTS:

Chair: Sue Rawlins

The Hoot 6 Woodlands Road Sonning Common RG4 9TE
chair.sonningcommonmagazine@gmail.com
 Tel 0118 972 2565

Editor: Diana Pearman

editor.sonningcommonmagazine@gmail.com
 Tel 07702 237956

Distribution: Helen Gavin

distrib.sonningcommonmagazine@gmail.com
 Tel 0118 972 4680

Advertising: John Pearman

advert.sonningcommonmagazine@gmail.com
 Tel 0118 972 2381

CONTENTS

- 3 Editorial
- 4-7 Community News
- 8-9 Eco SoCo/Repair Café
- 10 Jill Greenwood
- 12-13 Noticeboard
- 16 Parish News
- 18-19 In Focus - 10K run
- 20-21 Library
- 22 Widmore Park
- 26 Donations/Tom Fort
- 30 Health Matters
- 31 Puzzle Page
- 32-33 Church Pages
- 34 Advertisers Directory

Design & Artwork: Kevin Taplin
kevinatplcreative.com
kevin@tensevennine.com
 07887 902376

Print: Rick Peedell
 R.J.Peedell
rick.peedell@gmail.com
 07766 254422
 0118 9471955

Published by:
 Sonning Common Magazine CIC

Cover image:
 Sparkle & Joy ... a Magical Christmas Season!

While every effort is made to ensure the accuracy of information printed in this magazine, the editor and the publisher cannot accept any responsibility for the consequences of errors that occur.



MECE NEWS

MECE is not just a school it is a community



This month's article provides me with the opportunity to reflect on a very successful start to the school year at Maiden Erlegh Chiltern Edge.

The first term of the year has been packed with exciting events across the school. Our new year 7 students have settled in brilliantly, consistently achieving the highest attendance and highest number of positive behaviour points in the whole school, Year 8 wowed us with their projects for the Science fayre celebrating significant inventions and advancements. Year 9 had a brilliant day with the Army. Year 10 Key stage 4 students, have been on trips out to a local restaurant for GCSE Food tech and Hardwicke Hall for GCSE History and are working hard towards their first set of mock exams coming up. I have been really proud to show off our school to prospective families during the open events in October. The open evening was buzzing and our open mornings were fully booked. Our visitors were impressed with the improvements being made in the school and they commented on the positive relationships between staff and students and in particular how brilliantly our student ambassadors spoke about their school. To sum up in the words of one of our Head students Dariia: 'MECE is not just a school it is a community'.

One of the things we are particularly proud of at MECE is our offer of trips and extra curricular activities and at the start of the

half term break a group of MECE students and teachers headed to Ypres in Belgium to visit some key sites from the First World War including the Flanders Field Museum, the Commonwealth war graves and the site of the Battle of the Somme itself. The trip was a powerful experience for staff and students alike, immersing them in a significant period of our history. Samuel in year 10 wrote a brief reflection on his experience to share with you:

"Rows of sacrifice lay before me as the Belgian sun lit the stones and I stand in silence reflecting the stories of hurt, for my peace. The landscape once torn by war is now quiet but as I remember the fallen, I reflect on all those who fought in my midst.

The MECE history trip to Ypres and the Somme was a brilliant tour of the past and life in the First World War. From war graves and memorials to bomb craters and trenches, the trip encompassed the scale of atrocity of the war but also the glory of those who were there."

In the coming days we will commemorate Remembrance Day in school with a series of assemblies and our own observation of the silence on Monday 11th November. It is vital that our young people understand this element of our nation's history, not to glorify war, but to remember with respect and honour the lives of those who have given their lives on our behalf. We also specifically remember three former students of the school who died fighting for their country in more recent conflicts: Frederick Slough who fought in the Falklands, and Cyrus Thatcher and Barry Weston who served in Afghanistan.

I will finish by sharing one of the winning entries from this term's creative writing competition – a poem on the theme of remembrance. ●

With best wishes

BRIONY BOWERS
Headteacher Maiden Erlegh Chiltern Edge



Half a Song

*It's cold in the poppy field
The wind whispers through the trees,
The world all around seems to become one,*

*I feel myself begin to ache
As I hum the vibrant tune
A song of hurt and fighting boys
The soldiers to which they grew*

*Where there were two: who made a tune
Now one alone
Who only knows
-half his soul, half the song -
Who cries for the truth: the words belong*

*How once a grave seemed twice dug
How my old friend was by a thousand loved
My brother: who now is gone.
A tune in the poppy field - half a song.*

STOVES
2024



SCPS NEWS

So, I have now completed my first term as Headteacher of SCPS!



Any change can be unsettling, for children, staff and parents (and Headteachers!) but I started the term by reassuring my staff that although I was anxious to push the school forward, there would also be a sense of 'business as usual', and that we would not undo many of the great things we have accomplished over the last few years.

I did feel it was important to set out my stall a bit, and I have tried hard to set out an ethos for what makes us special by supporting and encouraging the wider education that children deserve within the well-publicised constraints of school funding, and whilst maintaining our excellent results and 'Good' Ofsted rating. We will continue to ensure that our children can enjoy the full range of sports, music, dance, drama, swimming, environmental initiatives and other activities we have always offered in addition to the curriculum.

Our staff turnover is comparatively low. People like working here. We look for people with qualifications of course, but we also like to be sure that people who work at Sonning Common – in all roles – bring a little more than just their teaching skills and qualifications. We look for people who

will teach the prescribed curriculum but who will do so in a way that inspires and motivates. I am confident that we have the right team in place for this, supported by an experienced Senior Leadership. This term we have welcomed three new members of staff – Miss Jones, Mrs Marrison and Miss Lunnon – to our team.

There have been some changes for the children too. We are re-focusing on our school values of kindness, politeness, doing your best, respect and truth. Each week assemblies are focused on one of the values and there are songs and themes to go with them. Star of the Week awards also address that week's value so that children know what to aim for. We have continued the practice of meeting families at the gates in the morning – it is a lovely opportunity to greet the children properly (I am almost there with all 360 names!) and to answer any quick parental queries. Children will also have noticed how well supported they are in all their activities, particularly now that our pastoral teams are fully embedded.

I have also said to staff, children and parents that my door is always open. It literally is, although our newest staff member (Rhubarb the Jack Russell) is hardly the fiercest photo gatekeeper. But she has been a real support to certain children at tricky times, and she is rapidly becoming a much-loved member of our group, hopefully adding to the family and community feel we strive for.

I often say to prospective parents that in order to get a flavour for what your 4-year-old might achieve at our school, speak to some of our 11-year-olds. They really

are some of the kindest, most polite and most rounded individuals you could wish to meet. They are our best advertisement. And they are free! I also slip in the fact that my own three children (and the children of several other staff members) came to our school and have done well for themselves. We are always happy to see our alumni and to hear how they are doing. Several of us taught 7-year-olds who are now at University or even bringing their own children to our school!

Finally, I must thank all of you – our village – for your roles in keeping our school the thriving local community that it has been, for the last 110 years. We are committed to another century of joy and exasperation, of triumph and challenge, and of wonder and amusement.

All those things that make a primary school the vital, energetic, inspiring place it should be...I wish you all a very Happy Christmas and look forward to 2025! ●

RACHEL SALMONS
Headteacher Sonning Common Primary School



SC SONNING COMMON
MAGAZINE
online

5 French Plays from Year 6

Read all about it on our website:
Scan the QR code for details



BISHOPSWOOD

Fostering independence and communication skills



We're thrilled to share that Bishopswood School has had a fantastic start to the new academic year! Our curriculum is focused on fostering independence and communication skills across all age groups, helping our students gain practical, real-life experience wherever possible. We believe that giving our students meaningful learning opportunities in everyday situations is key to building confidence and lifelong skills.

As part of this hands-on approach, some of our students have been making visits to local shops, where they practise their communication with community members, search for ingredients, calculate if they have enough money, and make their purchases independently. These small but significant activities allow our students to apply their learning in real-world settings, developing essential skills for the future. Our older students have also been busy gaining work experience, whether in hospitality or by lending a hand during lunchtimes, where they support our younger pupils and model positive social interactions.

We're also encouraging our students to engage with the broader community and enjoy new experiences. For some, this includes learning to swim and practising water movement skills, while others are transferring classroom knowledge into everyday settings by practising how to stay safe, communicate their needs, and build confidence in public spaces.

This term, we're excited to celebrate a range of seasonal events and cultural festivals, including Diwali, Guy Fawkes, Halloween, and Christmas, creating an inclusive and enriching environment for everyone. Our school, located on the shared grounds of Sonning Common Primary School and Maiden Erlegh Chiltern Edge, benefits from a strong partnership with these schools, allowing our students access to a variety of grounds and resources.

We also want to take a moment to say how much we enjoy being part of the Sonning Common community, especially through circulating and distributing the Sonning Common Magazine! Sharing updates and reading about community happenings helps strengthen the connection between our school and the residents, and we're grateful for this shared space.

However, we're currently facing a challenge: we're in urgent need of a minibus. A minibus would allow us to expand our community trips, enabling students to apply their learning in a wider variety of settings and bring their lessons to life in the "real world." We are actively fundraising to make this a reality, and every contribution brings us one step closer to giving our students more learning and life experiences. If you're able to support us by contributing to our

minibus fund, it would make an incredible difference!

Looking ahead, we're keen to build an even closer relationship with our local community and invite opportunities to collaborate. Whether it's through joint events, volunteer support, fundraising partnerships, or finding ways for Bishopswood School to give back to local causes, we're excited to strengthen our community connections.

If you'd like to get involved or have ideas on how we can work together, please reach out to us! We're committed to promoting a fully inclusive community that values understanding, diversity, and equity.

Thank you for being part of our journey, and here's to a wonderful year ahead! ●

PRYAH BHAGRATH
Headteacher Bishopswood



Scan the QR code for the JustGiving page



FREDDIE VAN MIERLO



Dear Residents of Sonning Common, I'm excited to introduce myself as your newly elected Member of Parliament. The past few months have been a whirlwind, and I'm really grateful for the chance to represent and serve our community. It's been a busy time getting to grips with the role and meeting so many of you, and I'm looking forward to working together to make a positive difference here in Sonning Common.

Reflecting on the experience of my first three months in the job, I'm pleased with where I've got to – but I recognise this is very much just the start.

Firstly, I'm delighted to share that after a busy summer period of hiring I now have a full team in place, including five caseworkers based in our new Chalgrove office who are working hard on the backlog of emails, and going above and beyond on individual cases. Parliament has already presented me with a great

deal of exciting opportunities including joining clubs that offer trips from the US to the Falklands, but I'm clear I've been sent to parliament to serve the constituents. Whenever the parliamentary schedule allows, I make sure I'm here in the constituency working on the issues that matter most to you.

Secondly, I've set to work meeting with local stakeholders, particularly in the NHS to build the relationships needed to get results for residents. MPs don't hold any 'power' to force bodies like the NHS to do anything. Instead, we have a convening power to bring people together and find resolutions together. MPs in some ways have less direct ability to demand an action than councillors – and have no access to the civil service – but I'll be putting my new parliament.uk email and embossed parliament stationery to good use!

Thirdly, I've also got to grips with the suite of tools available to backbench opposition MPs. I'm occasionally asked what impact an opposition MP can have – especially when the government has a large majority. It's a valid question and impact relies on being active, and willing to use everything available to you. For example, entering the ballot (a random lottery) to ask an 'oral question' to a minister gives MPs the opportunity to hold ministers to account. MPs will often use these to request meetings with ministers (which is hard to say no to in the chamber on TV!). I did exactly just this on the issue of the closed Marsh Lock Horsebridge between Henley and Shiplake, securing a

meeting with the Minister for Water. I've now got a line of communication open with the minister on this topic and hope to continue to work towards a solution.

Locally, since the election in July, I was delighted to visit the Sonning Common farmers market with Councillor Mike Giles. It was great to chat with local stall holders about everything from wildlife and football to wine, and I even managed to pick up some treats for my dogs!

Over the coming months, I will continue to meet with as many residents as possible and if you would like to get in touch, I would love to hear from you. ●

Best wishes

FREDDIE VAN MIERLO
freddie.vanmierlo.mp@parliament.uk

Below: Councillor Mike Giles (L) and Freddie Van Mierlo (R)



Pre-school scarecrows

See the photos on our website:
Scan the QR code for details



Henley and District Stamp Club

Read all about it on our website:
Scan the QR code for details



A REFLECTION ON ECO SOCO'S FIRST YEAR



Would anyone else be interested? How do you start a community group from scratch, with nothing and no funding? These were just a couple of the questions I asked myself back in January when I was considering starting a community eco group for our village.

As it turned out, so many of you are interested. You've turned out in large numbers to support our projects, from attending our specialist talks, creating hedgehog highways, planting Spring bulbs, to volunteering at our monthly Repair café!

And your enthusiasm also turned out to be the answer to my second question! We weren't starting with nothing... because we had all the wonderful people, connections and networks from within the village to draw upon.

And wow, have you done us proud this year: 7,000 Spring bulbs planted, 7

Repair Cafes held (hundreds of items mended and saved from landfill), 52 free garden trees ordered, 5 orchards planned, dozens of additional trees planned for verges and villagers volunteering to water them, a community veg garden on the way, lots of support from SCPC, Springwater Church, the library and local business.

All this means we'll be ending the year with big smiles on our faces at Eco SoCo and looking forward to 2025 with a spring in our step! When we'll be building on all our first-year projects and opening our minds to new ones.

Do you have an idea or a project you'd like to discuss with us? Please get in touch, we'd love to hear from you! You can find out more on our website ecosoco.org.uk or by using the QR code below.

To sign off I think Robert Louis Stevenson sums it all up rather

well: 'Don't judge each day by the harvest you reap but by the seeds you plant. ●

Best wishes,

JULIE

[E:ecosoco24@gmail.com](mailto:ecosoco24@gmail.com)



Repair Café helps get local pre-school children back on their bikes!

The Eco SoCo Repair Café has successfully renovated and repaired eight balance bikes for the Sonning Common Pre-School. Pre-School Manager, Jo Lawson, initially approached the Repair Café for advice about the balance bikes that have been a long-term favourite of the children but, over time, had become worn and damaged such that they no longer could be used safely. Gavin Brooks and Tim Smith from the Repair Café took on the challenge of cleaning and repairing all eight bikes such that they now can be used safely by all the children.

Following receipt of the repaired bikes, Pre-School Manager, Jo Lawson said:

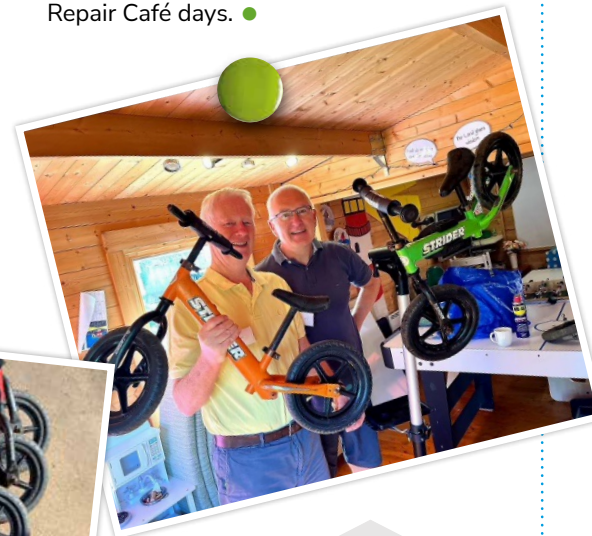
"A huge thank you from all the team for doing such a wonderful job on our balance bikes. The children were so

excited to have them back and were quick to get back in the saddle!"

The Eco SoCo Repair Café began in July 2024 to encourage people to consider repairing and recycling broken and/or no longer working items rather than sending them to landfill. It offers free advice, repair and maintenance for a range of damaged clothing and broken household items including: electrical items, computers and other IT equipment, garden tools and other machinery, clocks, children's toys, bicycles, clothing, jewellery etc.

The Café is co-organised by Louise Floodgate and Julie Shorter and has a number of willing volunteers who offer their services and professional skills free of charge. Although the Repair Café is a free community service, donations are

most welcome as they will ensure the sustainability of the Repair Café and help cover the costs of basic materials. Teas, coffees and a range of homemade cakes are also available to purchase. The Café is open from 10.00-12.30pm every first Saturday of the month at Springwater Church, Blounts Court Road, Peppard Common, Henley-on-Thames RG9 5EU, with the next session taking place on Saturday 2 November. Please note that repairs are accepted up until midday on Repair Café days. ●



WE ARE OPEN

Shedquarters is a new-ish charity for local people. Our new Shed is located next to Peppard War Memorial Hall, Gallowstree Road, RG9 5JA. Do come along for a cuppa, and a chat. If you have woodworking and/or metal working skills, or want to learn, pop in and see what we're about. We have an experienced team on hand, who will soon be able to help you with your own projects. Meanwhile come along and help us get organised, or just visit for some likeminded company - you will be most welcome.

Visit our website: www.shedquarters.org.uk

- From Monday, 25th November we will be open:
- Mondays, 10am - 1pm
- Tuesdays, 10am - 1pm
- Wednesdays, 10am - 1pm and
- Fridays, 10am - 1pm
- Please do call in.

MEET JILL GREENWOOD

An active listener and community volunteer



Jill will be a figure familiar to many people in Sonning Common having lived here for over sixty years. She always shows an interest in the lives of others and gives time to listen to concerns and worries. She was born in Kent and always wanted to teach, so went to Manchester University in 1961 to study Geography and English and loved being in the north of England very much. She then moved to Nottingham University to complete a Certificate in Education, a teaching diploma, and it was there that she met Barrie, who eventually became her husband.

Jill taught in Salisbury for a while but when she and Barrie married in 1964, they moved to Reading and she worked at a school in West Berkshire. It was at this time they moved into a house in Kidmore End and really enjoyed living in the area. When their daughter Katherine was born in 1965, they moved to Sonning Common and have remained here ever since. By 1968 they had another child

called Paul and the couple decided they wanted to work abroad for a while and took the brave decision to relocate to Kenya working for the Ministry of Development as teachers. They eventually settled at a school called Chavakali in West Kenya, a few miles north of Lake Victoria.

This was a very significant and exciting change for Jill, and she had her third child, Simon, in Kenya where she was completely overwhelmed by the kindness, hospitality and generosity of the Kenyan people. She and Barrie found great warmth and a strong sense of community that welcomed and supported them and their children. Jill was able to teach English at a local school knowing that her family was being well looked after and thriving under the care of their ayah and houseman. By 1973, with great regret, Jill and Barrie returned to Sonning Common because both were keen for their children to receive a British education. Leaving Kenya was difficult for them because they had grown to love the people and the country, but they still stay connected with old friends and colleagues to this day.

By 1974 the family were happily settled into Grove Road with the children enjoying the local schools and it was during this time in 1976 that Jill completed a secretarial course that enabled her to teach business studies at Chiltern Edge School where she taught for over twenty years becoming Head of Second Year in charge of

Pastoral Care.

Jill has always had a strong belief in the value of community and innate goodness of people so has been an ardent volunteer for many years. As well as co-founding the Village Gardeners with Chrissie Godfrey she played a major part in the inception of the Sonning Common Health Walks from 1995 -2006 and was a leader and organiser of walks for many years. She also enjoyed working as Brown Owl for the local Brownies for many years and was a very active member of the Chiltern Players as an actor and director. Her warmth, empathy and excellent listening skills also enabled her to work for the Reading branch of Samaritans for over thirty years first at Southampton Street and then at Cholmeley Road. Jill's contagious enthusiasm for the outdoors and physical activity also inspired her to complete many long-distance walks including the Coast to Coast, much of the Lake District and many walks around Britain and further afield. She also enjoyed playing tennis very much and was a member of Peppard Tennis Club where she still attends but as a nonplaying member.

Building strong community support is something Jill feels very enthusiastic about and her commitment to local causes is still much in evidence. She can still be found helping at the Fish Tea Parties and working with the Village Gardeners and we can only applaud and admire the work she has done for us all. Thank you, Jill. ●

Opportunities to grow confidence
Garden therapy at
Manor Farm

Support your local charity!

Open every weekday
9 am to 4 pm

Visit our **FESTIVE GLASSHOUSE**, open from
26th November for Christmas gift ideas, homemade
jams & pickles, Tombola, Raffle, pre-owned items,
books, jewellery & homemade mince pies, and,
to save disappointment, order your

**handmade
Christmas
wreath, now!**

For more information, please call 01491 628 933
Email: frances@waysandmeans.org.uk
www.facebook.com/greenshoots96
Manor Farm, Rotherfield Peppard, RG9 5LA
The Ways & Means Trust Charity: 255074

Merry Christmas

Robin James
OPTICIANS

- Comprehensive eye examinations
- Full contact lens service
- Free specs for children
- Extensive range of designer frames
- Main agent for Zeiss and Rodenstock lenses
- Free parking

0118 947 2099
www.robinjames.co.uk
44 Church St, Caversham, Reading (opposite Waitrose)

Mike Dockree Window Doctor
Misty & damaged glass units, Cat flaps,
Hinges, Handles & Locks

Checkatrade.com
madwindows62@gmail.com
Phone 07785928190 for free quotation

Property Maintenance
Plumbing, Electrics, Decorating, Woodwork
Roofing, Brickwork, Drains, Kitchens, Bathrooms
All Exterior, Groundworks and Garden work

Property Management and Lettings
Please call Roger on 07752759908

wood lane dentistry



Vikram Chugani BDS MFDS RCSEd MSc
Jessica Lee BDS MFDS RCS DipDSed
Claudia Wellman BDS MFDS RCSEng MSc MRD
James Mead BSc BDS
Vinesh Rajaram BDS DipRestDent
Zak Lee-Green BDS

Your local family friendly practice

- Routine general dentistry
- Affordable dental plans with Denplan
- Children seen on the NHS
- Tooth whitening
- Cosmetic dentistry and Implants
- Invisible braces
- Sedation for nervous patients
- Free parking

Now taking on new patients
Saturday and evening appointments available

**Happy Healthy
Smiles...**



Wood Lane Sonning Common Reading
Berkshire RG4 9SJ Telephone 0118 9722626
www.woodlanedentistry.co.uk

tpo ARCHITECTURAL DESIGN CONSULTANCY
DESIGN + COST CONSULTANCY + PERMISSIONS + TENDER/CONTRACTOR SELECTION

EXTENDING?
REFURBISHING?
PLANNING A NEW BUILD?

18
YEARS Proudly celebrating 18 years based in Sonning Common

E-mail: enquiries@tpodesign.co.uk Web: www.tpodesign.co.uk Tel: 07747 561463

~ Driveways & Patios ~

All aspects of groundwork undertaken
Fully insured / Manufacturer approved
Local family run business, 25+ years experience

Call 07909 006369
Email kcimprovements@hotmail.co.uk
www.kcimprovements.co.uk



**KC
IMPROVEMENTS**
PAVING & DRIVEWAY SPECIALISTS



Sonning Common Primary School PTA invites you to:

WINE TASTING

With special thanks to our sponsor **Abbeycrest**

ENJOY ARIA CARE

- Canapés and wine pairings
- Welcome drink on arrival
- White, red and desert wines with introductions from Madame Baillie.

WSET DIP

Friday 7th March 2025
7:30pm to 10:00pm
SCPS School Hall

With thanks to:

Advance Tickets only, £20 per person.
pta@sonning-common.oxon.sch.uk

All proceeds go towards Sonning Common Primary School
Minimum age 18

Christingle Service

Christ the King
Church,
Sedgewell Road
Christmas Eve
4.30pm

Please join us at this very special event -
the perfect way to start Christmas!
All welcome!

WREATH WORKSHOP

Fundraising event
Friday 6th December
7.30-9.30pm at Springwater Church
Blounts Court Road, RG9 5EU

Book your place on eventbrite:
tinyurl.com/SWFBWreath

e: foodbank@springwaterchurch.org.uk
f: Springwater Foodbank

Create Christmas wreath to take home & adorn your front door.
£25 session includes:
all wreath materials & festive refreshments

All proceeds go to the work of Springwater Foodbank, supporting around 60 households in and around Sonning Common

South Chiltern Choral Society Publicity

Join South Chiltern Choral Society to sing Mozart's Requiem?
Rehearsals 7.30 from Monday 6 January at MECE
Performance Saturday 29 March 2025
Greyfriars Church, Reading
More members will be very welcome!
Why not give us a try?
.....
www.southchilternchoralsociety.org.uk
Membership Secretary: Anne 07817 544 532

The GP is closed but you need urgent medication...

If you run out of medicine outside of your GP practice's normal opening hours and need some urgently, there are a few ways to get an emergency supply quickly, even if you're away from home.

Visit a pharmacy
Under the Urgent Provision of Repeat Medication Service, Community Pharmacists may be able to supply you with a further cycle of a previously repeated medicine, without having to get a prescription from your GP. It's a good idea to take an old prescription or the medicine's packaging with you, if you have it.

You'll be interviewed by the pharmacist to find out:

- if you need the medicine immediately
- who previously prescribed the medicine (to make sure they're a trusted source)
- what dose of the medicine would be appropriate for you to take

The pharmacist will need to know the answers to all these questions before they can supply a prescription-only medicine without a prescription in an EMERGENCY

Controlled drugs and antibiotics are not provided through this service, you will need to ring 111 for these.

Use the [NHS pharmacy service search](#) to find other nearby pharmacies and their opening hours - some are open even on public holidays.

NHS 111 service
Patients can now access 111 online (www.111.nhs.uk/emergency-prescription) to request a limited emergency supply of a medicine you've completely run out of. This must be a medicine you are prescribed regularly, through a repeat prescription.

If you'd like to speak to someone first, call **NHS 111** free of charge by dialling 111 on your mobile or landline. The person you speak to will be able to look up an out-of-hours pharmacy or another NHS service in your area.

SONNING COMMON PRIMARY SCHOOL PTA INVITES YOU TO:

CHRISTMAS WREATH WORKSHOP

With Bea from Dots & Joy

TUESDAY 3RD DECEMBER 7:30PM
THURSDAY 5TH DECEMBER 7:30PM
Sonning Common Primary School Hall

Tickets £45 including kit, tuition, glass of mulled wine & nibbles.
To book, please email:
pta@sonning-common.oxon.sch.uk
All friends of SCPS welcome!

Santa on his Tractor

Sunday 15 December

Santa's new route published shortly via the Facebook page: www.facebook.com/socosantaclaus.
Posters so keep your eyes peeled. See how many you can find!

Updates posted throughout December
On the night posting updates on Santa's progress through the village.

This year we will be raising funds for Shedquarters and Sonning Common Scouts.
We look forward to seeing you on 15 December.

Christ the King, Sonning Common
St John the Baptist, Kidmore End

Christmas Fair

Saturday, 14th December 2024
11.00 am - 1.00 pm
Sonning Common Village Hall,
Wood Lane, Sonning Common

FREE ENTRY

Grand Raffle, Tombola, Homemade Soup, Mince pies, Cakes, Crafts & more... Come along and enjoy the Festive Fun!

The Church Choir will be singing Christmas Carols outside the hall - stay and listen, or join in!

Whatever you want to store...

...for whatever reason - house sale and purchase not coinciding, travelling, house building work, paperwork overload or just "de-cluttering" to sell your house more quickly - we offer a friendly and flexible service at Shiplake.

With competitive rates, secure storage all on one level and hassle free 24/7 access, contact us now!



Only 10 minutes drive from Sonning Common in Shiplake

01189 404163
www.barn-store.co.uk

HENLEY GLAZING AND WINDOW CENTRE LTD

01491 629901

Glass Supply, Glazing Service, Mirrors, Shelves, Table Tops, sealed Units, Lead Lights, Locks, Secondary Glazing, Shower Screens

Suppliers & Installers of: UPVC, Aluminium & Timber Windows, Doors & Conservatories, Facias, Soffits & Guttering



12, Manor Farm, Peppard Common, Henley on Thames RG9 5LA
Fax: 01491 629904 Email: andy@henleyglazingwindow.co.uk



HAS RELOCATED AND IS NOW AT
64 WOOD LANE
SONNING COMMON RG4 9SL

0118 972 1240 * 0777 179 0916

(PREVIOUSLY THE DAVIS TATE OFFICE)

WEEKDAYS 9.30AM – 4.30PM
SATURDAYS 9.00AM – 1.00PM
SUNDAYS CLOSED



"We turn feelings into flowers"

Fed up with limescale?

A Water Softener would be your solution

Compass Water Softeners

SALT, SALES, SERVICE, INSTALLATION

0118 972 3773 0118 941 0869 0796 700 9838

www.compasswatersofteners.co.uk

Email: martin@compasswatersofteners.co.uk

Sonning Common Pet Care

At Home Pet Care

when you are on holiday or at work

Cats

Daily visits to clean, feed and pamper

Small Pets

Home visits to care for your Rabbits, Guinea Pigs, Hampsters, etc

Dog Walking

Regular or occasional walks

Puppy Visits

To feed, play, toilet break and clean up

Please call Alison for further information

Tel 0118 9722948 / 07787 114536



BONNER LOCKSMITHS

INSURANCE APPROVED

DOORS & WINDOW LOCKS SUPPLIED & FITTED,
CHANGED OR UPGRADED (BS3621)

DOMESTIC & COMMERCIAL PREMISES
DIGITAL LOCKS • BARS

FREE NO OBLIGATION QUOTE

ALL AREAS COVERED

CALL OUT SERVICE

01491 680216



CRESTWELL HOUSE

FULL MEMBER OF BRITISH LOCKSMITH INSTITUTE

Beech Lane, RG8 0PX • Woodcote Nr. Reading
PROPRIETOR: S. J. BONNER

T.C. FULLER PLUMBING & HEATING
Established 2006

• Installation • Maintenance • Service • Repair
Boiler replacement, heating system upgrade & adaptations, power flush.
Hot water cylinder replacement.
All plumbing work undertaken.

Bath/Shower rooms, water softeners-salt supplied.

• No call out charge • Free estimates • Fully insured

Email: t.c.fplumbheat@gmail.com

Tel: 0118 9724097

Mob: 07800 914 880



Paul's Painting and Decorating.
Plastering. Carpentry.

Property and Garden Maintenance.

07583 623040 or 0118 9473735

Friendly, Local, 30+ Years Experience, Free Quotes

CURTAINS, CUSHION COVERS, BLINDS ETC.

ALL AT COMPETITIVE PRICES

CALL CAROLINE ON

0118 954 2448 or 07815 610007

HEIGHTS
TREE CARE

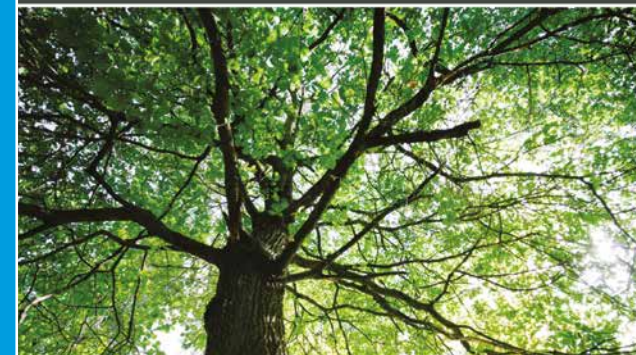
- All Aspects of Tree Work
- Hedge Cutting
- Private and Commercial

TO ARRANGE A FREE QUOTE, CONTACT LAURENCE WILLIAMS

T 0118 9721003 • M 078135 86735

E info@heightstreecare.co.uk

www.heightstreecare.co.uk



FULLY QUALIFIED PROFESSIONALS
£10 MILLION PUBLIC LIABILITY INSURANCE

WE UNDERTAKE ALL TYPES OF BUILDING WORK

- BUILDING EXTENSIONS
- BUILDING RENOVATION
- BUILDING ALTERATION
- GAS AND CENTRAL HEATING
- LOFT CONVERSIONS
- PLUMBING
- BOILER INSTALLATION
- SERVICE AND REPAIR



Tel: 01189 724 794 Mob: 0784 068 1057
E: info@amaxs.co.uk

Everyone needs something from...

Heath & Watkins

41 Wood Lane, Sonning Common, RG4 9SJ
Tel: 0118 437 5171

- Eco Refills
- Logs, Coal & Gas
- Key Cutting
- Seasonal Plants & Bulbs
- Seeds



- Haberdashery
- Light Bulbs
- Hardware
- Gardening Tools
- Water Softener Salt
- Kitchenware
- Kilner Jars
- Painting & Decorating Supplies
- Cleaning Sundries
- Compost
- & EVEN MORE!

Find us on Facebook for news on special offers, new stock arrivals and other good stuff.

PARISH NEWS

The content of this page is the sole responsibility of, and is paid for by, Sonning Common Parish Council

Community SpeedWatch

Community Speedwatch is a national initiative where proactive members of local communities can join together into groups to improve road safety. The groups have the support and supervision of the local Police force which for Sonning Common is Thames Valley Police (TVP). Everything is under the knowledge of a dedicated police officer who supports and reviews each of the selected sites, giving feedback on our reports.

TVP supply the loan equipment and the Parish Council support the initiative.

Community Speed Watch groups heighten the awareness of drivers that there is a speed limit enforced in the area. Using an approved device to measure speed and record details of speeding vehicles which are logged and passed to TVP.

Help your community and children to be safer when near traffic.

South Oxfordshire have reduced the speed limits in residential areas to improve safety, minimise accidents, improve living conditions for locals and improved the chances of surviving from any traffic accident.

Volunteers give an hour or two per month in small teams' to record excessive speeders which is then fed back to Thames Valley Police, who will contact persistent offenders with a cautionary letter, visit or traffic stop.

Our neighbours in Kidmore End and Gallowstree Common have a very active group and we co-ordinate with them.

The Sonning Common Community Speedwatch welcome new members who

can do an hour or two per month to help to increase the awareness of the speed on our village roads. It may be just logging a registration number or using the radar gun to check the speed. ●

Further information on how to join can be obtained at:

www.communityspeedwatch.org

Sonning Common Speedwatch Group - New volunteers welcome.



Remembrance ceremony in the Village Hall

Attendance to the ceremony was closely monitored to 65 sitting and 100 total

Alex and Gillian read the poem "Why Do You March, Old Man?", followed by the "Still", the Homage, and the 2 minutes' silence. Then "Carry On" and the Kohima Epitaph. Alex explained that, in addition to honouring the memory and sacrifice of all who have given their lives in our country's name, there was especially remembering and honouring the 3 lads from the village who most recently gave their lives, in the Falklands and in Afghanistan.

While this was happening 2 scouts moved to the foyer to uncover Fred Slough's Memorial.

Diana, told of the local area's link with the WW1 poet Wilfred Owen and read his poem 'Anthem for Doomed Youth' ●



Anthem for Doomed Youth

What passing bells for those who die as cattle?
Only the monstrous anger of the guns.
Only the stuttering rifles' rapid rattle
Can patter out their hasty orisons.
No mockeries now for them; no prayers nor bells
Nor any voice of mourning save the choirs,
The shrill, demented choirs of wailing shells
And bugles calling for them from sad shires.
What candles may be held to speed them all?
Not in the hands of boys, but in their eyes
Shall shine the holy glimmers of good -byes.
The pallor of girl's brows shall be their pall;
Their flowers the tenderness of patient minds,
And each slow dusk a drawing-down of blinds,

Sadly, Wilfred was killed exactly a week before the war ended. He died on 4 November 1918. ●

ARBOCARE

TREE SURGERY LTD

Qualified and Experienced Arborists

- Established over 25 years
- Contractors to the National Trust
- Crown reductions
- Thinning
- Felling
- Hedge Trimming
- Stump Grinding
- Decay Detection & Tree Reports

Free phone: 0808 1555815

Mobile: 07778811136

www.arbocare.co.uk

Wallingford Tiles & Bathrooms
Are Delighted To Announce



THE BATHROOM
STUDIO

01491 377 272

35 Wallingford Rd, Goring
thebathroom.studio

Graham Blake soft furnishing

- Loose Covers
- Curtains
- Re-Upholstery
- Tracks & Poles

For personal, helpful service, please call

Tel: 01844 261769 Mob: 0780 1182400

gblakefurn@gmail.com

www.grahamblake.com

Time 4 Pilates



Want to look and feel great!!
Try Pilates – controlled, yet gentle exercise

Classes in Sonning Common area
Including Ante and Post Natal

Mondays / Tuesdays / Thursdays
Beginners and Intermediates
Max 12 in Group (6 in Pregnancy classes)
Private sessions also available

Christine Brook – Member of Body Control Pilates® Association
Ring 07789 717017 or email chris@time4pilates.co.uk
Website at www.time4pilates.co.uk

Beacon Flooring

A Family Run Business

Carpet Wood
Karndean Vinyl

Free fitting on carpet orders over £150

16 High Street, Goring. 01491 454095
beaconflooring@aol.co.uk
www.beaconflooring.co.uk

Caversham Aerial Services

TV Aerials Supplied and Fitted.
Poor Reception? Old aerials?
Can't get the new digital channels?

Give us a call - We can help!

Phone 0118 9673596

www.caversham-aerials.co.uk



SPONSORS MAKE THIS RUN A POSSIBILITY



Sunday 6th October saw the return of the Sonning Common 10k. On a beautiful crisp Sunday morning, the Sonning Common Primary School welcomed 291 runners to the school for the start of the 10km race. This race is a fundraiser for the Sonning Common Primary School.

The course took runners out towards Memorial Park then headed out onto the countryside lanes around Wyfold before returning through Kidmore End. The runners were cheered by family and friends and welcomed onto the finish line on the school playground by Henley Hawks commentator and grandparent at the school, Karl Schorman. Runners were given plenty of friendly cheers from the locals who lined the route and provided motivation and jelly babies to help them on their way.

The winning male was Rob Corney, a

local Reading runner who completed the course in a PB time of 33 minutes and 26 seconds. He was spotted by one of our marshals winning the Thames Valley Cross Country race later that same afternoon!

Our winning female was Nicola Lee who again set a superb female course PB of 37 minutes and 37 seconds.

Both our 2nd place male (Oli Walker) and 2nd place female (Catherine Hill) grew up in the village, with Catherine attending the school. Catherine has just returned from the Amsterdam Marathon having run a very impressive 2 hours and 51 minutes.

Our returning winner from last year, Ben Paviour who lives in Sonning Common came in 3rd place. Our 3rd place female, Carrie Hoskins and Ben won't mind us mentioning that both of them compete in the V50 category, so their results are incredibly impressive against our 1st and 2nd places.

We would like to give a huge thanks to our co-sponsors, Shiplake College and Focus at Badgemore Park. Without

their ongoing support, putting on an event of this size would not be possible. We also would like to say a special thanks to Richard Beville who continues to support our event by providing all the signage and advertising boards but also kindly gets up early and marks out the course for us.

The water station was provided by Kate and Becky from Raise the Bar Bootcamps who brought tremendous energy and much needed water for many of our runners. They were located at the halfway point along with the Sonning Common First Responders who continue to support the event.

Our start/finish photographer was Kathryn Fell who lives in the village and whose children also attend the school. Charlotte Dingley Photography, who grew up in Sonning Common, photographed runners around Memorial Park and Simon of stokerpix was at the halfway point.

A big thank you to all our volunteers, particularly the Sonning Common Primary School staff who helped throughout the day and the many parents and friends of the school. We would also like to thank PSCO Graham Davey of the Henley Neighbourhood team who came to support and ensure the smooth running of the event.

Thank you to Kathryn Fell for the photos.

Please save the provisional date for the 2025 race: Sunday 5th October •

CATE STURGESS
Race Director



DID YOU MISS OUT IN 2024?



The library in Grove Road is about so much more than books. It is a community space where everyone is welcome. On Friday mornings drinks and biscuits are served at the Social Morning. Come along on a Thursday morning if you fancy a board game, there's a selection on offer including Rummikub, dominoes, chess or you can even bring your own along.

Did you make it to one of the many events organised by The Friends of Sonning Common Library (FoSCL) this year?

In April, Sublime Science was welcomed to the library for the first time. This was a hands-on workshop with a mad professor. Peach M, who was 9 at the time, said, "I really enjoyed Sublime Science at Sonning Common Library because everyone who wanted to participate got a chance to, and every time there was an experiment the man explained how it was done. My favourite thing was making sherbet. It tasted so good".

The performing author and poet, A.F. Harrold entertained some lucky children in May. This larger-than-life character had them doubled over with laughter

as he brought to life many of his zany poems.

July saw children's author, Fiona Barker, leading two story and craft sessions. One was for tiny tots, and the other for children aged from 5 to 7 who, as well as enjoying stories, learnt how to draw a swift using a sweet potato!

There was a Lego Master Builders workshop in January, and ZooLab, which is a firm favourite, returned a couple of times. Children were also encouraged to go outside as they followed the Easter I-Spy Trail and went on The Big Bear Hunt.

Village Day gave FoSCL the opportunity to get out into the community and it was great to have so many people visit our stall to have a go at the Snap-A-Prize game.

For adults, the author evenings proved to be more popular than ever with all three selling out even after the capacity had been increased. Carolyn Kirby, James Wright, and Michael Smith are all very knowledgeable about their subjects and it was wonderful to listen to them speaking so passionately. We already have the first author for 2025 booked into our diary.

Follow, "Friends of Sonning Common Library" on Facebook to see when the tickets go on sale. Alternatively, keep an eye on www.friendsofsonningcommonlibrary.org.uk.

Sonning Common Library is run with the help of volunteers. In September FoSCL organised an evening of escape-room style fun (together with drinks and cakes - obviously!) as a thank you for all the hard work they put in. If you think you might be interested in volunteering, pop into the library and have a chat with the Library Manager, Juliet Legg.

As 2024 draws to a close, the FoSCL committee are excited to start planning events for the year ahead. If there is anything you would like to recommend, please contact friendsofsonningcommonlibrary@gmail.com. In the meantime, we would like to invite Friends of the library, volunteers, and all library users to come along to Grove Road on the morning of Friday 20 December for some mince pies and festive cheer, and to raise a glass to this precious community asset. ●

ALISON SMITH
FOSCL

GREETINGS FROM THE LIBRARY

Well, it's December and we can't put off Christmas any longer. But let me take you back to memories of the summer for a moment. Over July and August we ran the Summer Reading Challenge (SRC) to encourage youngsters to keep reading even when school isn't making them! This event is very popular and children get small rewards for finishing books, with a medal and certificate at the end. This year we had our very first South American finisher!

Ivan Luca, eight years old, was visiting his grandma, Adele O'Connor, in Sonning Common all the way from Brazil. He visits every year and has been a member of the library for seven years. This year he came into the library to join the Summer Reading Challenge and, while he was in the UK, he read some of our books and received rewards. Unknown to him, he was sent home with the rest of the give-aways, and he kept on reading books in Portuguese and completed the challenge. Well done Ivan Luca! Our farthest away SRC finisher!

And that wasn't our only Summer Reading Challenge good news story, as we also had a Treasure Hunt competition

around the library. All finishers got a sweet treat and there was grand draw at the end of the summer. Henry Bourne, from Cane End (a bit closer than Brazil!) won the draw and received a book as a prize: a brand new release from the popular Bunny vs Monkey series. Henry is pictured with his younger brother, James. As you can see, the book was a hit!

We can't put Christmas off anymore, I'm afraid, but the Library has you covered. If the preparations wear you out, come into the Library and take a load off. We have Christmas novels ready and waiting and also plenty of books with ideas for seasonal food and crafts. We have lots of non-Christmas related books too, if you need a break and want to plan for your holiday next summer. In January we will be thinking about your health and your resolutions for the New Year so pop in for some inspiration to get 2025 off to a good start.

Of course, we don't forget our younger customers. In the Saturdays in December leading up to Christmas, we will be having Christmas stories, crafts and yummy cake sales so do pop in from 10am as an alternative to the dreaded Christmas shopping. The decorations will be up and there will be plenty of seasonal books for the youngsters too.

So Happy Christmas and best wishes for the New Year from myself, Elaine and all of our lovely volunteers. Thank you for your visits in 2024 and we look forward to welcoming you with new books, displays and events in 2025. ●

JULIET LEGG



The Jenny Jones Library Quiz

The Friends of Sonning Common Library (FoSCL) held their annual fund-raising quiz on Friday 11 October. It was a very successful event with 13 teams playing for the new Jenny Jones Library Quiz Trophy, and wine donated by Laithwaites. Jenny Jones, who died in June, had been a very active member of FoSCL for many years. It was felt this would be a particularly fitting way to remember all she did for FoSCL as, among many other duties, she was well-known for running the bar at the quiz with her family alongside her.

The very first winners of the trophy were Two Hoots (Leigh & Sue Rawlins, Jeremy & Alison Smith, Ash & Katherine Smith) and the trophy was presented to them by Kevin Jones, one of Jenny's children. The runners up were The Naughty Schoolboys.

The event raised over £700 and FoSCL would like to thank the local businesses who once again showed their support of the library by donating raffle prizes:

Brambles Florist, Co-Op Sonning Common, Forrester's Sonning Common, Heath & Watkins, Laithwaites Wines,

Loddon Brewery, the Herb Farm, Waitrose Caversham

It is fund-raising events like this that enable FoSCL to subsidise activities in the library throughout the year for both young and old. Keep an eye on www.friendsofsonningcommonlibrary.org.uk for details of upcoming events or follow "Friends of Sonning Common Library" on Facebook. ●

ALISON SMITH
FOSCL

Widmore Park - a new retirement community for Sonning Common

An update from the Project Team

Inspired
Villages

FARRANS
A CRH COMPANY



Building and civil engineering contractor, Farrans Construction, is delivering the first phase of a new retirement community located on Blounts Court Road, for client Inspired Villages. Farrans' first phase of works will include 73 high-quality, age-appropriate, sustainable homes for over 65s and a state-of-the-art wellness suite within the village centre.

Social Value

This year so far, we have partnered with Maiden Erlegh School, the Scouts, ECO SoCo and have started a series of monthly coffee mornings held in the village hall working with Age UK and Inspired Villages. There have been 4 successful mornings to date and our last one this year is on Thursday 12 December. Please come along. Further support has been provided to help fund the repair café and community garden projects at Springwater Peppard church.

Look ahead - December- February

The summer saw good progress on the apartment blocks having roofing and windows in place. The village core structure has also been completed, with brickwork across the whole site underway. Over the next 3 months we are continuing internal works on the apartment blocks, as well as starting on the village core. We will be carrying out roadworks in the new year involving widening and resurfacing the road on Blounts Court Rd and we will also be preparing for the arrival of the marketing suite.

The site will be closing for 2 weeks over the Christmas period. From close of play on Friday the 20th December returning to work on Monday the 6th January. The site will be visually monitored remotely for the full period and will have security visits daily. Should you have any issues or concerns within the period or if you have any queries regarding the project, please contact the helpline –

**01483 717 321 or email
sonningcommon@farrans.com**

Wishing you a very merry Christmas and a wonderful new year.



This editorial content was provided by Farrans construction

Computer Problems?

PC misbehaving?

Fault diagnosis, Maintenance & Upgrades, Networking, Data Recovery, Virus Cleaning, Broadband, Telephone Cabling & Extensions, TV, Mobiles, Website Design, Development & Hosting, and much more. Home and Business Support. Windows and Mac.

01491 680036 or 07961 476664
mail@influentialcomputers.com
www.InfluentialComputers.com
Robin, Henry and Angus Piercey
Influential Computers Ltd - A Family Run Business Since 1984

PILATES IN SONNING COMMON + HENLEY



CONTACT Alyth Yealland
alyth@pilatesabc.co.uk

07521699265 www.pilatesabc.co.uk

al3d
STUDIO
DESIGN • DEVELOP • DELIVER

ARCHITECTURE &
INTERIOR DESIGN
DESIGN - DEVELOP - DELIVER

Contact us on 01844 281715 or via email: info@al3d.co.uk
www.al3d.co.uk



**Not all plumbers are
created equal.**

Same-day, fixed price, local heating & plumbing services you can count on!

- Boiler Installation, Service & Repair
- Heat Pump Design, Installation & Service
- Central Heating & Radiators
- General Plumbing Works

From leaky pipes to heating repairs, dripping taps to old boiler nightmares, you can count on us to keep your home cosy & warm.

premierheatingsolutions.co.uk

0118 230 2855



'Excellent friendly service, very professional and reasonably priced. I'd highly recommend.'

Tori Yates, Google Review



See what our clients have to say about Bridges ...



At Bridges, we love what we do and pride ourselves on delivering a highly professional service. From the little things that others miss to the neighbourhoods we know like the back of our hands, we're dedicated to giving you impartial, expert advice. Our reputation is built on good old-fashioned qualities like honesty and transparency. Today, as an independent Estate Agency, we know our business and our markets like no one else.



I was really impressed with the photography of my property, super professional. Also thank you to the Bridges team for their support during a difficult house sale and purchase.

HELEN
Wood Lane, Sonning Common – OCTOBER 2024



Andy as well as his team, responded promptly, with constant progress updates. Communication was excellent. They were all friendly, helpful, professional, throughout the sale, also the purchase of a new property. I would highly recommend them.

SALLY
Heatherfield Place, Sonning Common – OCTOBER 2024



I had a great experience selling my mums house through Bridges. I wanted an agent that was able to sensitively bring people around knowing mum was elderly and on her own. The Bridges staff were caring and it was always the same agent that came meaning mum felt safe with them. I would thoroughly recommend them.

MRS JONES
Grove Road, Sonning Common – APRIL 2024



A huge thank you to Bridges in Sonning Common. From Andy and Liana's honest and spot on valuation, to their personal and always professional service. We had used other agents before instructing Bridges and no one matched their experience and knowledge. The best agent I have ever worked with, and one I could not recommend higher.

D CRESSWELL
Gardeners Copse, Sonning Common – OCTOBER 2024



Thank you to Andy and his team for your thoroughly professional service with a personal touch. The support provided throughout the sale process was invaluable in progressing to completion in the desired timeframe.

TOBY AND SARA NUTT
Hugh Carson Close, Sonning Common – SEPTEMBER 2024



From the beginning they were helpful and efficient and I would recommend using them, particularly with their local knowledge of the area.

K RICHARDSON
Kidmore End Rd, Chalk House Green – JUNE 2024



Request for donations to provide a gift voucher for disadvantaged people in Sonning Common at Christmas 2024

Since 2020 this has been a charitable cause led and supported by the Sonning Common magazine. It started in Lockdown when it was perceived to be a 'bit of a treat for' disadvantaged members of our community.

In 2020 there were treat boxes, called "hampers", and by 2023 the number had risen to 90. We tried to provide 12 items for the Christmas period in each box or bag. So logistically it was challenging.

We had not received any feedback on what had been provided, but there was a sense that a different approach might be more acceptable.

Following discussions with the Food Bank organisers and the staff at FISH,

giving people a choice seemed to be the rationale and with it came the idea of giving vouchers.

The FISH team provides individual support for 30 housebound residents and there are currently 60 households in the village who receive Food Bank parcels. It is predicted to be more by Christmas 2024.

Many of these are families who might comprise one parent and child, 2 parents and 5 children, or all the permutations within this number. It is thought that the number of recipients at the Food Bank is likely to grow over the next few weeks.

The value of the voucher would be dependent on the amount of funding we can raise from various businesses

and organisations and through setting up a JustGiving page for donations - scan the QR code below. These vouchers are likely to be All For One (covers 170 retailers), or the Co-op store in the village, which will provide the recipients with the maximum range of choices for them to spend.

I do hope that you are able to support this worthy cause at this very special time of year for giving. A gift of any amount would be most welcome and much appreciated. ●

DIANA PEARMAN
Editor, Sonning Common magazine
0770 223 7956



TOM FORT JAMMY B.....

I have many faults, but I don't think boastfulness is one of them – unkind people might say there wasn't much to boast about. But I am going to blow my own trumpet just a little.

Did I not tell you that I won first prize for my apricot jam at the Sonning Common Horticultural Society Autumn Show? Well, I did. In the stone fruit jam category. Not bad, eh?

In fact, it was a triumph and did something to erase the memory of a severe disappointment the previous year, when I submitted a pot of my marmalade. I eat my marmalade every morning of my life, and I know it is good, otherwise I wouldn't eat it. So, I was pretty confident.

My wife came back from the show

having won several prizes for flower displays, chutney etc. I asked how my marmalade had done. You came second, she said. Second? It was a blow, I admit it. But one can't be a sore loser, and second is better than third. I asked how many entries there had been. Two.

Two! So actually, I came last, not second. I was speechless, then crushed, then indignant. And wounded.

What made it worse was that I have a brother who makes marmalade, and he is pathetically competitive. He thinks his marmalade is better than mine, but I KNOW it isn't. Anyway, he submitted a pot of his to the global marmalade competition organised

at Dalemain in Cumbria which attracts hundreds of entries and won a silver medal.

How galling is that! I congratulated him through gritted teeth and tried not to hope that he would choke the next time he piled some on his toast. I tried to suggest that had I submitted mine I would probably have been a gold contender, but it didn't sound very convincing, even to me.

So, the prize for the apricot jam did something to restore my pride. And it is good, even though I say so myself. Because I am not boastful. ●



KILLPEST
Pest Control Services

Need to deal with a pest problem?
Covering Sonning Common, Peppard and surrounding areas
Wasps, Rats, Mice, Fleas, Ants, Squirrels
Fully insured 30+ Years Experience
Local Family Business

07748 060499 • 07391 995010
01189 478149
info@killpest.com • www.killpest.com

Shaun Guard
TV AERIAL & WIFI SERVICES

- Aerials - supplied, repaired & poor reception solved
- Satellite - Sky Q dish upgrades, discreet dish installations
- Internet / WiFi - blackspots cured, internal & external data cables installed in your home and outbuildings
- TVs - hung on your wall or set up and tuned

OXFORD AERIALS

Call us on 01182 055155
shaun@oxfordaerials.co.uk
www.oxfordaerials.co.uk

Sonning Common

MOT

Test Centre

MOT SPECIAL OFFER
- All Makes All Models -
£10 OFF
your next MOT on production of this voucher

All Makes Serviced & Repaired
at competitive prices.

Free Local Collection and Delivery available

Sonning Common Garage
Looking after local customers for over 60 years
Peppard Road, Sonning Common RG4 9SU
0118 972 2021
www.sonningcommongarages.com

Service Opening Times: Mon-Fri 8am - 5.30pm • Sat & Sun CLOSED
Offers valid on production of this advert. Only 1 voucher per MOT. Offer not available in conjunction with any other offers. Sonning Common reserves the right to modify the terms of this promotion at any time. Correct at time of going to print.



A. B.

WALKER

Independent, family-run funeral directors.

Our compassionate and professional team are here to help you with everything related to a funeral from pre-planning to bereavement support.

Local branches in
Henley-on-Thames and Caversham.

www.abwalker.co.uk
01491 413434

HENLEY JOINERY
 Manufacture through to installation




Tel: 01491 410 246
 Email: info@henleyjoinery.com





SC SONNING COMMON MAGAZINE

Please mention the magazine if you respond to any advert



yes you can with Slimming World

Sonning Common:
 Kidmore End Memorial Hall,
 Reades Lane, RG4 9LL
 Tuesdays 08.00 & 09.30

Caversham Park:
 The Milestone Centre,
 Northbrook Road, RG4 6PF
 Tuesdays 16.00, 17.00 & 19.00

Amy-07826109207
slimmingworld.co.uk

Enhance the appearance of your property with our quality assured friendly service




Moss Removal & Roof Cleaning - Roof Maintenance & Repairs
Render & Brickwork Cleaning - Patio & Driveway Cleaning
Installation of Bird Protection - Fitting of Chimney Caps & Gowls

info@mossinator.co.uk - 01865 362797

ABBEYCREST
 ✕ ARIA CARE

Come and *enjoy a break* with us

Everyone deserves a break at Christmas and our welcoming community is here to help. Ensure a wonderful time for all this festive season by seeking comfort and joy with a winter respite retreat.

From festive activities to indulgent homemade meals and treats, our communities go above and beyond to ensure your home-away-from-home is extra special this Christmas.

With 24-hour care and support along with the opportunity to form new friendships with residents and team members, you'll love your respite stay with us.

We look forward to welcoming you to our community, get in touch today. Scan here to find out more.



0808 223 5401 | ariacare.co.uk
 Sonning Common, Berkshire, RG4 9RG



WINTER WELLNESS TIPS TO HELP YOU STAY HEALTHY



1. Limit the spread of germs.

Remember to cover your mouth and nose when you cough or sneeze.

2. Stay hydrated.

3. Take vitamin D. Good for bones, muscles and immunity.

4. Manage dry skin.

5. Try Relaxation or Meditation

6. Get vaccinated.

7. If you are unwell, consult/contact your pharmacy or your GP surgery.

WAYS TO STAY WARM WITH MINIMAL HEATING

If you're ever in a situation where you need to stay warm without heating, these cost-effective tips will help keep your home and body warm without the reliance on heating oil or gas.

1. Electric Blanket

Even though the cost of electricity has risen, an electric blanket or heated pad can help at low cost. **BUT with all devices electric or gas make sure they are safe for use. Have them checked if unsure. With any electrical heater a RCD (residual current device) will**

protect you and for some gas heaters and all solid fuel you should have a CO (carbon monoxide) detector.

2. Open your oven after cooking

If you're making a meal in the oven, after you've finished turn your oven off and open the doors. This will heat your kitchen with the excess heat from your oven and will not cost anything extra.

3. Use your curtains

Shutting your curtains at night, when temperatures are at their lowest, will help shield you from the cold entering through your windows. However, opening your curtains on a sunny day can give your home some added warmth for free.

4. Stop any draughts

Draughts can really reduce the temperature in your home. Self adhesive foam draught excluders are an effective remedy for sealing draughts but there are other more durable and effective alternatives.

Keep your home warm: Heat rooms where you spend the most time to at least 18°C

5. Window insulation

Double glaze windows using a seasonal insulation kit which you can install yourself. This creates a second barrier to limit the cold from entering your home. It can be removed in summer.

6 Warm drinks

Even though boiling your kettle does come at a cost, a hot drink will increase your body temperature. The hot mug will also give extra warmth to your hands.

7. Keep your body and feet warm

Your feet play an essential role in regulating your body temperature. Therefore, having warm feet can make a big difference. Great ways to insulate your feet from the cold are warm slippers or thick socks.

Layer up: Wearing multiple thin layers, traps body heat and keeps you warmer than one thick layer.

Wear insulating materials: Wool, fleece, and thermal underwear are good choices.

Protect extremities: Wear a hat, scarf, gloves, and warm shoes or boots when you go outside. ●

SUE LITCHFIELD

PRESCRIPTIONS FROM THE SONNING COMMON HEALTH CENTRE

Remember to order early prescriptions before the holiday

The latest date to request your medication is Monday 16 December 2024

Many conditions are urgent so remember to order early

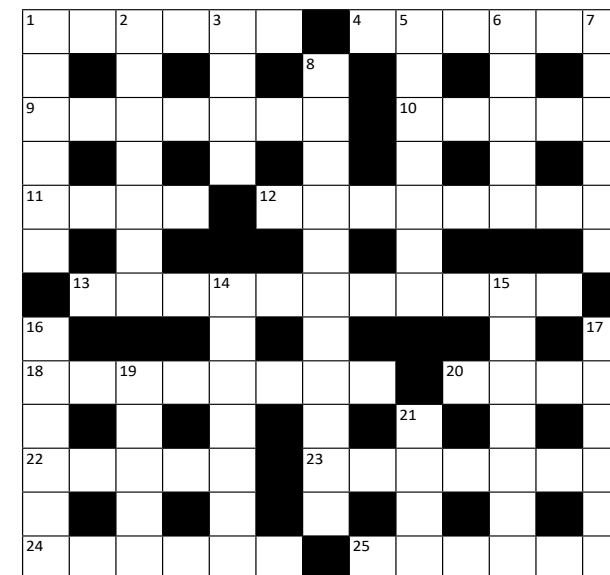
You could end up very ill if you run out of your medicines



PUZZLE PAGE

By DAVID DUNSTAN

Cryptic crossword



ACROSS

- Surprise attack in the morning scrubland (6)
- Gentle breeze in Zambia – hyper, possibly (6)
- Make-up in mother's vehicle – ace! (7)
- Be second in the way out (5)
- Poet going backwards is dull (4)
- Sign with name – it has a sting in its tail (8)
- Whoops! Bid so badly for village school (11)
- Bury gal badly around river – it's a crime (8)
- Stake is returned at volcano (4)
- Permit animal fat without head (5)
- Liquid soap is a fraud; old work returning (7)
- Lures cod? Yes – badly (6)
- Emergency credit by the Thames in Oxford (6)

DOWN

- Fleet creates a drama (6)
- I am bats boiling rice (7)
- Persian king in ambush ahead (4)
- Facial feature sounds erudite to a Cockney (7)
- He and I include papers for Swiss girl (5)
- Greek wine has sulphur removed – it's in your eye (6)
- Accept harsh punishment for popular saying (11)
- Fifty percent fashion is neither here nor there (7)
- Work after a month for sea creature (7)
- A table on the plane (6)
- A sum of confusion is well-known (6)
- Remains about – moss half gone (5)
- A couple of fruit, I hear (4)

See answers on page 34

Sudoku

Grading: medium

		1		8			4	
4		8	2		9			6
					1		5	8
				8	4	2	9	
	4						6	
6	9	3	1					
5	1		9					
3			5		4	2		1
	6			1		5		

Cryptogram

The following quotation has been encoded using a simple letter substitution. What does it say?

"YEWSTN EC IW RA MTOH, DBS TSTNWOU CLNEWP EC EW RA MTONS." –

GEVSIN MBPI

Quiz: First lines

Given the author and first line, can you name the book?

- Jane Austen: "It is a truth universally acknowledged, that a single man in possession of a good fortune, must be in want of a wife."
- Charles Dickens: "It was the best of times, it was the worst of times."
- Charlotte Bronte: "There was no possibility of taking a walk that day."
- George Orwell: "It was a bright cold day in April, and the clocks were striking thirteen."
- Herman Melville: "Call me Ishmael."
- J M Barrie: "All children, except one, grow up."
- Thomas Hardy: "The schoolmaster was leaving the village, and everybody seemed sorry."
- Ernest Hemingway: "He was an old man who fished alone in a skiff in the Gulf Stream and he had gone eighty-four days now without taking a fish."
- Miguel de Cervantes: "Somewhere in la Mancha, in a place whose name I do not care to remember, a gentleman lived not long ago, one of those who has a lance and ancient shield on a shelf and keeps a skinny nag and a greyhound for racing."
- J K Rowling: "Mr and Mrs Dursley, of number four Privet Drive, were proud to say that they were perfectly normal, thank you very much."



CHURCH NEWS



SPRINGWATER

Springwater is a community of people seeking to live out the way of Jesus and engage with God. We strive to love God and love our neighbour just as Jesus asked. We meet at various times during the week.

On Sunday mornings at 10.30am a group meet to discuss the bible, be encouraged, worship, pray, contemplate, sometimes eat together, hear about Jesus and from God and be physically and spiritually restored. People who come always sense the Spirit of God and are encouraged and empowered. Please feel free to come along.

We also have a conversational bible study on a Thursday and other spiritual support groups during the month seeking as well as groups that meet in homes weekly or monthly.

During the week Springwater is heavily engaged with the local community. Recently a team from the church was in Romania helping in the development of a bakery supporting the ostracized Roma community. We also manage a foodbank that is supported by other local churches, individuals, businesses, and schools. The

food bank runs a life skills program with CAP on a Thursday afternoon.

On Monday mornings at the church, Compassionate Loaf facilitates a free artisan bakery workshop and will have a pop-up bakery shop on Saturday 23 November. On Wednesday mornings, the Ark creates safe spaces for parents, guardians, and toddlers. Our Revive café partners with Eco Soco and other groups to bless the local area with a repair café that occurs on the first Saturday of every month.

Our Christmas programme, advent and carol service will be on our web site, and we invite all to join us.

Feel free to join us—more details are on our website, www.springwaterchurch.org.uk, or call the office on **0118 972 4519** you'll be more than welcome! ●

ST MICHAEL'S CATHOLIC CHURCH

With the beginning of the new school year, it is pleasing to see pupils from St Martin's, our parish primary school,

resume their contribution to our 10.30am Sunday Mass on the first Sunday of each month. It gives them an opportunity to contribute to parish life while growing in confidence in public speaking and reading. Our teenagers are also making their own contribution on a monthly basis.

During October, the sick of the parish were offered the sacrament of the Anointing of the Sick at all the Masses over one weekend. This is a special prayer and anointing for those with serious illness, about to have operations or have grown frail due to old age. It is also offered to those in care homes and those who are now confined to home. The following weekend a special nuptial blessing was given to all the couples of the parish that were celebrating a significant wedding anniversary. This was followed by celebratory cake and coffee. Another event was a board gaming afternoon run to raise money for the Missing People charity. It catered for both the casual and more competitive gamer. As well as being a great social event about £1000 was raised.

A significant event takes place in the life of the Catholic Church in this country from Sunday 1st December, the First Sunday of Advent. Our readings during Mass will be taken from the English Standard Version Bible rather than the New Jerusalem Bible that has been in use for 55 years. Worldwide, on the 29 December Pope Francis will initiate a Year of Jubilee for the Catholic Church that occurs every 25 years. The theme is: Pilgrims of Hope. We intend to play our part in this global event.

Advent and Christmas will soon be upon us. Do check our website for events that will be taking place, particularly our Christmas Masses. Everyone is most welcome. www.saintmichaelsonningcommon.org.uk ●

ST JOHN THE BAPTIST AND CHRIST THE KING

We begin the season of Advent on Sunday 1st December. Advent marks the beginning of a new church year, a time when Christians anticipate the celebration of Christ's birth. In all the business of Christmas preparations, a quiet time of reflection on each Sunday of Advent might be welcome! Both churches in the parish will be holding services and lighting Advent candles on each of the four Sundays. There will also be a Benefice Advent Carol Service to mark the start of the season at All Saints', Peppard, on 1st December at 6.30pm.

Please see below for the dates and times of other Advent and Christmas services taking place throughout December.

The parish Christmas Fair will take place on Saturday 14th December, from 11.00am – 1.00pm. This year, the fair will be held in Sonning Common Village Hall and will feature carol singing by the parish church choir. There will also be stalls to browse, raffles to enter and homemade food to enjoy: do come along!

The much-anticipated building work at Christ the King is due to begin in the New Year. Contractors have been appointed and should be on site from the beginning of January. The work, to replace the roof, fit solar panels, build a small entrance extension, redecorate the building, renew lighting and heating and replace outside paving, is likely to take several months and is due to be completed around the end of April, possibly in time for Easter.

Advent and Christmas services:

Sunday 1st December: Advent Carols, All Saints, Peppard, 6.30pm

Tuesday 17th December: Service of lessons and carols, St John's, 7.30pm

Christmas Eve: Christingle at Christ the King, 4.30pm

Christmas Eve: Midnight mass, St John's, 11.00pm

Christmas Day: Family Eucharist, Christ the King, 9.30am

Christmas Day: Sung Eucharist, St John's, 11.15am

Sunday, 29th December: Benefice Eucharist, Christ the King, 9.30am

Wishing you all a happy and peaceful Christmas and New Year. ●

CHRISTMAS 2024 COLLECTION FOR CIRDIC

Can you help? The churches of Christ the King, Sonning Common, and St John the Baptist, Kidmore End, are supporting the work of CIRDIC (Churches in Reading Drop-in Centre) in the run-up to Christmas.

Established in 1990, CIRDIC is a safe and welcoming drop-in centre for homeless people living in the local community. The Centre offers a range of support services including hot meals, clean clothes and toiletries, shower facilities and access to health care.

The Centre relies on donations to provide its excellent service. This year, local authority funding has been reduced significantly, so donations are even more vital. CIRDIC welcomes any of the following: men's clothing, socks and underwear (medium); women's clothing, socks and underwear (size 8, 10, 12); deodorant; shower gel; toothbrushes and toothpaste; razors and shaving cream; towels; tinned meats and fish; tinned fruit and vegetables; tinned rice pudding and custard; peanut butter; chocolate spread; Marmite; brown sauce; ketchup; mustard; salad cream; instant coffee; biscuits; sugar; marmalade. No pasta or baked beans please!

Donations can be left in the collection boxes in the porches of both churches.

Thank you. ●

CHILTERN EVANGELICAL CHURCH

Christmas Events

Saturday 21st Dec @ 5 - 6:30 pm: The Christmas Story

An interactive, all age family friendly experience bringing to life the

message of Christmas in a fun and modern way. Followed by festive food and drinks. Everyone welcome.

Sunday 22nd December @ 4:30 - 5:30 pm: Carols by Candlelight

A more traditional Carol service suitable for all ages at our Church building on Grove Road. Do come and join us as we celebrate the birth of our Saviour Jesus told through Carols and Readings.

Further details of all events available on our website. www.cecuk.church

Amidst all the festive cheer at Christmas, it's easy to forget the deeper meaning – the arrival of Jesus Christ. Jesus wasn't just a figure from long ago. He was a real man who walked among us, taught about God, and challenged people to rethink how they lived and loved. Crowds gathered to hear Him, drawn by His message of peace, love, and truth.

Jesus offered something priceless – a connection with God. His words provoked the religious leaders of the time, and eventually He was put to death. Yet, that wasn't the end of the story. Christians believe that Jesus, fully human and fully divine, rose from the dead to offer us a way back to God.

Christmas celebrates this amazing gift. God gave us His Son and invites each of us to receive His love freely. When we say "yes" to Jesus, we're not just adding religion to our lives. We're stepping into a relationship that changes us, offering peace, forgiveness, and a new start. As we exchange gifts this Christmas, why not consider the greatest gift of all?

You're most welcome to join us and discover what it means to follow Jesus. ●

KEVIN JUDGE
Chiltern Evangelical Church

PUZZLE PAGE ANSWERS FROM PAGE 31



2	6	9	8	1	7	5	3	4
3	8	7	5	6	4	2	9	1
5	1	4	9	2	3	6	8	7
6	9	3	1	4	2	8	7	5
8	4	2	7	9	5	1	6	3
1	7	5	6	3	8	4	2	9
9	2	6	4	7	1	3	5	8
4	3	8	2	5	9	7	1	6
7	5	1	3	8	6	9	4	2

Cryptogram

S	I	S	C	R	I	S	C	S	V	C	D	E
U	U	I	E	A	R	I	A	R	I	A	R	I
O	O	P	M	A	H	S	W	O	L	A	V	A
M	O	P	A	V	F	O	E	O	F	O	O	O
A	N	E	Y	A	R	L	G	B	U	R	G	B
F	C	H	A	A	A	A	A	A	A	A	A	A
A	D	O	S	P	O	H	S	H	B	I	S	H
A	O	H	S	C	O	R	P	I	O	N	D	R
N	O	I	O	S	C	O	R	P	I	O	N	D
A	M	S	C	A	R	A	T	H	M	A	S	C
E	Y	E	X	E	I	S	T	A	M	A	S	C
R	A	H	C	H	A	H	A	R	A	R	A	R
A	M	B	U	S	H	Z	E	P	H	Y	R	A

Cryptic crossword

- Quiz: First lines**
1. Pride and Prejudice. 2. A Tale of Two Cities.
 3. Jane Eyre. 4. 1984. 5. Moby Dick.
 6. Peter Pan. 7. Jude the Obscure.
 8. The Old Man and the Sea. 9. Don Quixote.
 10. Harry Potter and the Philosopher's Stone.

"WINTER IS ON MY HEAD, BUT ETERNAL SPRING IS IN MY HEART" – VICTOR HUGO

ADVERTISERS DIRECTORY

A B Walker & Sons Ltd Funeral Directors	27	Heath & Watkins Heights Tree Care	15	Property Maintenance	11
Abbeycroft Caring Homes	29	Henley Glazing & Window Centre Ltd	15	Robin James Opticians	11
a3d Studio (Architecture & Interior Design)	23	Henley Joinery (Bespoke Joinery & In-house Installation)	14	Slimming World	28
AMAXS Plumbing Heating Electrical	15	Influential Computers (Computer Problems)	28	S J Hinton Carpenter & Joiner	35
Arbocare Tree Surgery Ltd	17	KC Improvements (Driveways & Patios)	11	Serviced Office Available in Sonning Common	35
Barn Store (Secure Self Store)	14	Kingfisher Kindergarten (Pre School)	23	Sonning Common Garage	27
Beacon Flooring	17	Killpest (Pest Control Services)	11	Sonning Common Pet Care	15
Beville Estate Agents	2	Mike Dockree Windows	Back	Spa Treatment Room (Reflexology & Massage)	Back
Bonner Locksmiths	14	Mossinator Roof Cleaning Systems	27	T C Fuller Plumbing & Heating	14
Brambles (Florist)	14	Paul's Painting, Decorating and more	11	The Bathroom Studio (formerly Wallingford Bathrooms)	17
Bridges Estate Agents	24/25	Peppard Building Supplies	28	Thermostat (Refrigeration & Air Conditioning)	Back
Caversham Aerial Services	17	Pest Wizards (Pest Control Services)	14	Time 4 Pilates	17
Compass Water Softeners	15	Pet Country Supplies	35	Tomalin and Son Funeral Directors	Back
Curtains, Cushion Covers, Blinds, etc	14	Pilates ABC	35	TPO (Architectural Design Consultants)	11
Farina Auto Services Ltd	Back	Premier Heating Solutions (Heating & Plumbing Services)	23	TV & WIFI Services	27
Functional Physio	Back		23	Wee-Cot Seating	35
Graham Blake Soft Furnishings	17		23	Wood Lane Dentistry	11
Greenshoots (Local Garden Produce)	11				

Sonning Common Magazine cannot be held responsible for the quality of the products or services advertised in the magazine. Residents should be aware that companies or traders whose advertisements appear in the magazine have not been checked or vetted by the Magazine. We suggest you ask advertisers for references if you need reassurance.



PEST WIZARDS
YOUR LOCAL PEST CONTROL SERVICE

WASPS & ALL INSECTS
RATS, MICE, MOLES & SQUIRRELS
PROMPT SERVICE

MARK DEARLOVE • 07446 377816
(01491) 833282 • info@pestwizards.co.uk

S J HINTON
Carpenter & Joiner

Wide range of high-quality carpentry services delivered by skilled craftsman

Built-In Wardrobes, Cupboards, Shelving.
Kitchen Fitting, Doors, Floors, Windows,
Stairs, Roof Construction.

Telephone Steve on **0118 972 3602**
or **07887 653866**



PEPPARD
BUILDING SUPPLIES

***FREE LOCAL DELIVERY**

Competitive Trade Pricing
Specialist Insulation Stockists
Bricks/Blocks/Aggregates
Driveway Shingle
Landscaping Products
Paving Display
Trade Shop
Plenty of Parking
Web Offers!

Call **0118 972 2028** / Sat Nav **RG4 8XA**
Visit www.peppardbuildingsupplies.com



BRIDGES
Independent Estate Agents
EST. 1992

Tired of working from home?


Excellent serviced office available in the centre of Sonning Common village!

- One monthly all inclusive rent of £495
- Plenty of space for two desks
- Contemporary reception area
- Parking
- High speed broadband
- Flexible terms

For more information please contact
Andy Richards on 0118 9722770 / 07850 137236
or email admin@bridgesproperty.co.uk

WEE-COT SEATING
Upholstery, Loose Covers,
Replacement Cushions,
Roman Blinds,
French Polishing
& Furniture Repairs
LIZANNE SMITH
0118 972 4560


PET COUNTRY SUPPLIES



We stock pet food and supplies for dogs, cats, all wild and cage birds, wildlife, rabbits, guinea pigs other small animals, farm feed and all aqua & pond fish.....and if we don't stock it we will try to get it.

Open: Monday to Saturday 9.00 am – 4.00 pm

60 Years experience of Pet Supplies
See our website for the latest offers
petcountrysupplies.co.uk
Free local delivery for orders over £25



43A Wood Lane Sonning Common
0118 972 34950
interestedin@petcountrysupplies.co.uk
Find us on Facebook



Sonning Common Health Centre
Wood Lane, Sonning Common,
Reading, RG4 9SW

- Back & Neck pain
- Muscle / Joint Strains
- Ligament Sprain
- Sports Injuries
- Whiplash Injuries
- Shoulder Injuries
- Post-Operative Rehabilitation
- Pre / Post Natal Exercise
- Respiratory Conditions
- Lower Limb & Foot Problems

● Appointments available every day
● Pilates classes throughout the week

Jo Pereira MCSP
Catherine Matthews MCSP
Chartered Physiotherapists

T: 0118 405 0089
E: info@functionalphysio.co.uk www.functionalphysio.co.uk

The team at Functional Physio are Chartered Physiotherapists registered with the Health Professions Council and are recognised by all major insurance companies, including Bupa and Axa PPP.



THERMOSTAT
REFRIGERATION & AIR CONDITIONING LIMITED

AIR CONDITIONING

INSTALLATIONS
MAINTENANCE
REPAIRS

REFRIGERATION

ALL COMMERCIAL REFRIGERATION
COLD ROOMS
WALK IN FRIDGES & FREEZERS
CELLAR COOLERS

We also hire refrigerated & freezer trailers!



info@thermostatltd.co.uk

07402968008



Autoservices Ltd
Tel: 01189 724036

NOW OPEN

The Paddock
Kidby's Yard
Kennylands Road
Sonning Common
RG4 9JT

**Competitive Prices
Excellent Service**

Servicing and Repairs on any make

- ◆ Tyres
- ◆ Batteries
- ◆ Exhausts
- ◆ MOT
- ◆ Car Sales



www.spa-treatment-room.com



**THE
SPA TREATMENT ROOM***
REFLEXOLOGY
AROMATHERAPY &
DEEP TISSUE MASSAGE
HOLISTIC FACIALS
ONCOLOGY MASSAGE &
SCAR SPECIALIST



Laura Johnson 07775 379155 laura@spaliving.co.uk
9 Courtenay Drive, Emmer Green, RG4 8XH * female only therapies

Kingfisher Kindergarten



*Thriving Pre School
for children aged
2 years and above*

We accept all Government Funding and have immediate spaces available

Contact us for a visit 07894 966562

laryne@kingfisherkindergarten.uk

www.kingfisherkindergarten.uk

T&S

**Tomalin & Son
Funeral Directors**

Henley-on-Thames family run
Independent Funeral Service



Golden Charter
Funeral
Plans

£40 John Lewis voucher or
£40 donation to Sue Ryder Care
with each pre-paid funeral plan taken out on production of this advert

Tel: (01491) 573370

www.tomalins.co.uk tomalin@btconnect.com

Anderson House, 38 Reading Road, Henley-on-Thames, RG9 1AG